

**MINI EXCAVATOR** | 25Z-1 / 26C-1



# TOUGH TO BEAT



OPERATING WEIGHT  
**2550 – 2675kg**

ENGINE POWER  
**18.4kW**

BUCKET TEAROUT  
**22.3 – 25.9kN**



# TOUGH TO BEAT FOR PERFORMANCE

Choose the 26c-1 with conventional swing or the 25z-1 for true zero tailswing in tight spaces: all designed with durability, reliability and towability in mind.



## ENHANCED POWER

The 25z-1 and 26c-1 have performance enhancements across the hydraulics, tracking, attachments and notably, the new 18.4kW Kohler engine.





# TOUGH TO BEAT FOR SAFETY

Follow-me-home worklights and our unique 2GO hydraulic isolation system provide extra safety on site, whilst maintaining a safe towing weight for extra mobility.



## ADVANCED LIFT OVERLOAD

With our lift overload feature, visual indicators and audible alarms ensure machine safety limits are clear.



# TOUGH TO BEAT FOR COMFORT

Experience unmatched comfort in our redesigned cab. Optional air-conditioning, premium suspension seat and Bluetooth radio create an ideal working environment.



## NEW CAB

Our new, more spacious cab featuring flat glass surfaces, provides more all-round space and visibility than ever before, with easier and safer access.





# TOUGH TO BEAT FOR COST OF OWNERSHIP

Designed to deliver lower operating costs with 500-hour greasing intervals, auto stop and idle functions, coloured hydraulic hoses, plus flat glass.



## SAVE FUEL

Auto Idle can be activated to increase fuel efficiency, while nine engine modes to let you choose the perfect balance of performance or economy.



# TOUGH TO BEAT FOR DURABILITY

In a world of harsh environments, JCB mini excavators are tough. Built to withstand the challenges of any site, they ensure reliability when it matters most.



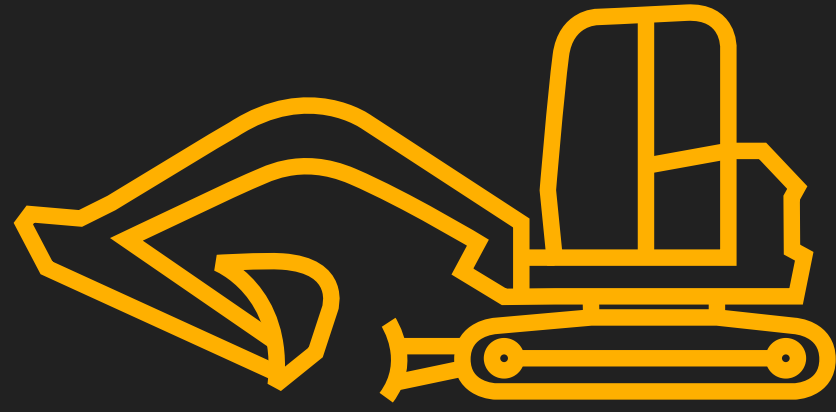
## HIGH STRENGTH BOOM

Our robot welded boom and dipper is made from high tensile steel for long life durability.





# MINI EXCAVATOR | 25z-1 / 26c-1



## SPECIFICATION

| MODEL             | 25z-1     | 26c-1   |
|-------------------|-----------|---------|
| Dig depth         | 2,990mm   |         |
| Service intervals | 500 hours |         |
| Transport length  | 4,200mm   | 4,350mm |
| Transport height  | 2,474mm   |         |
| Transport width   | 1,500mm   |         |
| Operating weight  | 2550kg    | 2675kg  |



## STANDARD FEATURES

- 500 hour greasing intervals
- 18.4kW Stage V diesel engine
- No engine after-treatment
- Auto kick-down track motors
- 9 tie-down points
- Bolt-on grab handles
- LED worklights
- Steel bodywork
- 2-way dozer
- Rubber tracks





# TOUGH TO BEAT

[FIND OUT MORE](#)



[REQUEST A QUOTE](#)



[www.jcb.com](http://www.jcb.com)